

Temple Row  
Birmingham

Abstract graphic consisting of several thick, dark green wavy lines that flow from the top left towards the bottom right, creating a sense of movement and organic form.

arca

The building

# arca - on point

A building that offers you more. Encouraging original thinking and individuality.

Arca features a double height lobby/reception which extends into a circular glazed façade. Arranged over 10 floors, the building provides up to 58,842 sq ft of newly refurbished high quality Grade A office space, available as Cat A space so you can work the way you want to and the 7th floor delivered fully fitted for those who want to get straight to work.



or



Cat A  
flexible  
floorplates

7th floor  
ready to go –  
fully fitted space









# beyond the curve

A welcoming arrival experience has been created, with refined design features and stylish occupier lounge.

The reception interior has been completely remodelled and enhanced to provide an impressive welcome to occupiers and visitors.



# All things considered

BREEAM®

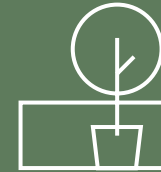
Excellent targeted  
to refurbished floors



EPC A Rating  
achieved



Targeting  
Platinum



Landscaped and fitted  
communal roof terrace



BCO cycle provision for  
98 secure cycling spaces



13 showers with male, female  
and accessible changing  
room facilities



Locker room with  
112 lockers



Excellent  
natural daylight



Access to rail stations,  
trams and buses nearby



Demand Logic - energy  
consumption monitoring



# Step outside

The spacious 6th floor roof terrace, which is available to all occupiers, provides the ideal environment for meeting and entertaining, or to simply relax and unwind.





Fully fitted 7th floor

# Ready for work

The 7th floor has been fully fitted to provide an open workspace that's ready for you to hit the ground running.



# Design in the detail



Highly visible site location overlooking St Philip's Cathedral



Double height reception, opening onto Temple Row



Reception meeting lounge



1:10 sq m office occupational density



Flexible floor plates from 5,470 sq ft



Dedicated risers and external plant space for tenant fit-out



2 x passenger lifts



Raised floors



Ceilings with exposed services



LED lighting with automatic sensors



Secure basement car parking available



Communal WiFi



Clear floor-to-ceiling heights of c3.18m



New VRF air conditioning



Refurbished male & female toilets on each floor



# A fresh start

New changing facilities provide a seamless end to your commute, so you can be ready to start your working day feeling fresh.



# Arrive in style

The end-of-journey bike store offers space for up to 98 cycles, with efficient, easily accessed rack space so they can be securely stored.





# don't stay in line

A woman with brown hair in a bun, wearing a yellow and blue plaid shirt, is shown in profile looking out a window. The background is a blurred cityscape. Overlaid on the image are several white, stylized, curved lines that suggest movement or wind, starting from the left and flowing towards the right.

Workspaces to encourage productivity and keep you ahead of the competition. Whether you need fully fitted that's ready for work, or a space to make your own, we've got you covered.



# Step inside

The Cat A floors provide a flexible space that's ready for you to make your own, filled with natural light and floor to ceiling glazing.





## Fully fitted 7th floor



# Accommodation

## Schedule of areas

Floor	Condition	Status	sq ft	sq m
9th	–	Let to Total Media	–	–
8th	Cat A	Available	5,662	526
7th	Fully Fitted	Available	5,638	524
6th	–	Let to Runway East	–	–
5th	–	Let to Axa	–	–
4th	Cat A	Available	9,014	837
3rd	Cat A	Available	9,050	841
2nd	Cat A	Available	14,878	1,382
1st	–	Let to Axa	–	–
G	–	Let to Runway East	–	–
LG	Cat A	Available	14,600	1,356
<b>Total</b>			<b>58,842</b>	<b>5,466</b>

\* Areas subject to final measurement in accordance with RICS code of IPMS 3 (Offices) measuring practice.

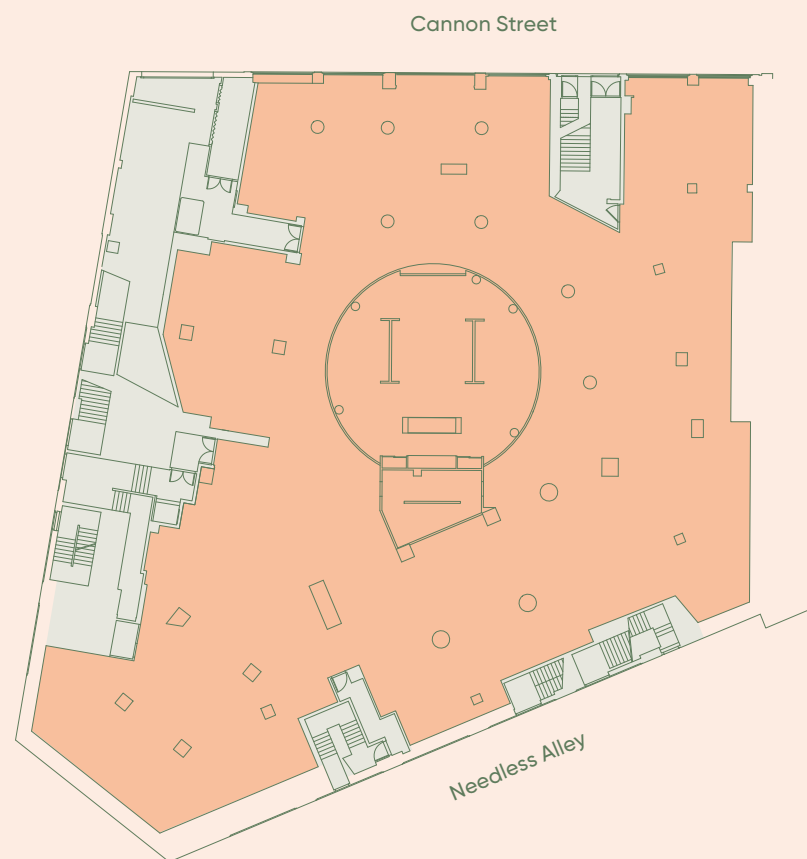
- Office
- Core



For indicative purposes only.  
Not to scale.

## Lower ground floor

14,600 sq ft / 1,356 sq m





# Accommodation

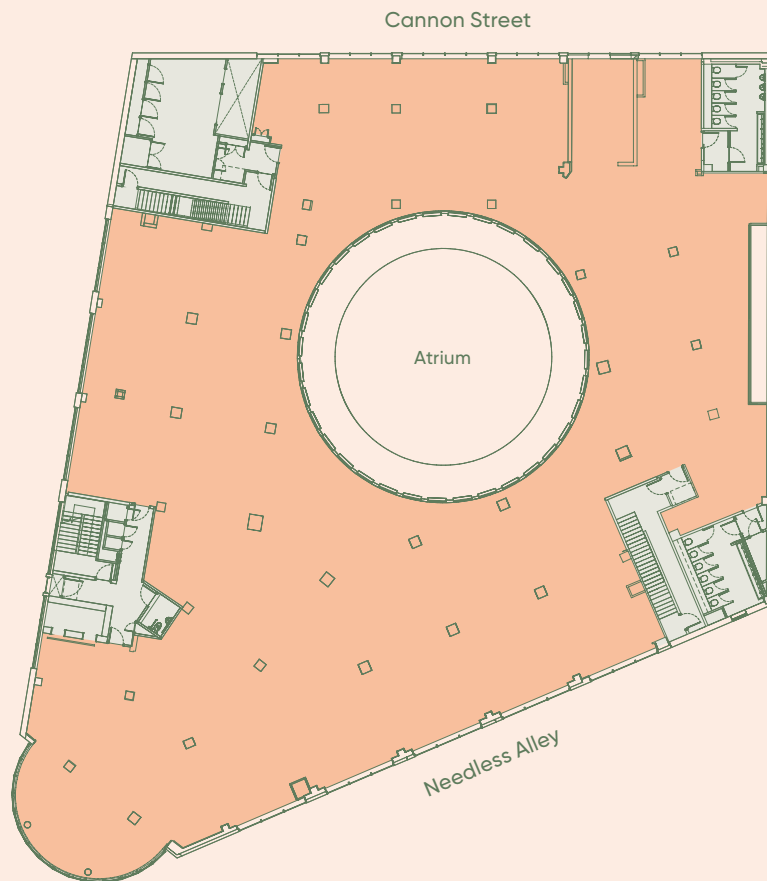
- Office
- Core



For indicative purposes only.  
Not to scale.

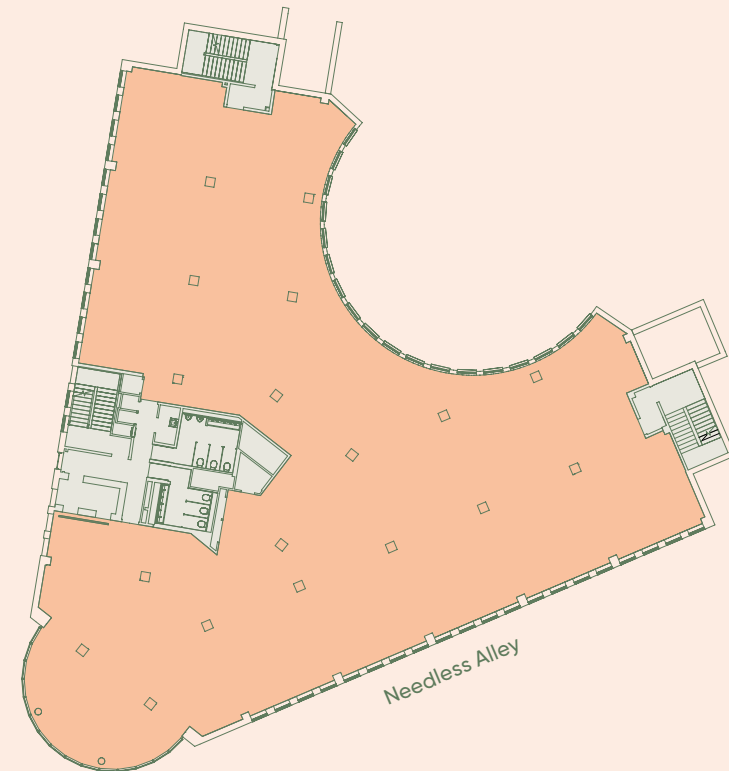
## 2nd floor

14,878 sq ft / 1,382 sq m



## 4th floor

9,014 sq ft / 837 sq m



# Accommodation

- Office
- Core

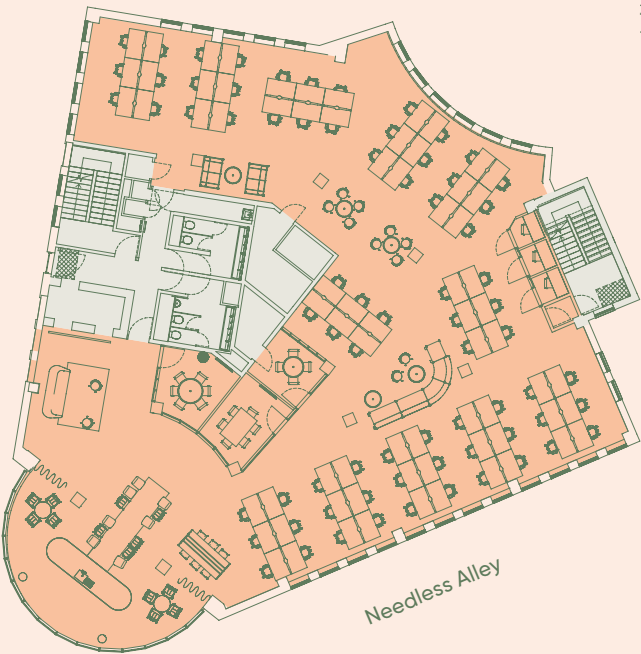


For indicative purposes only.  
Not to scale.

## 7th floor

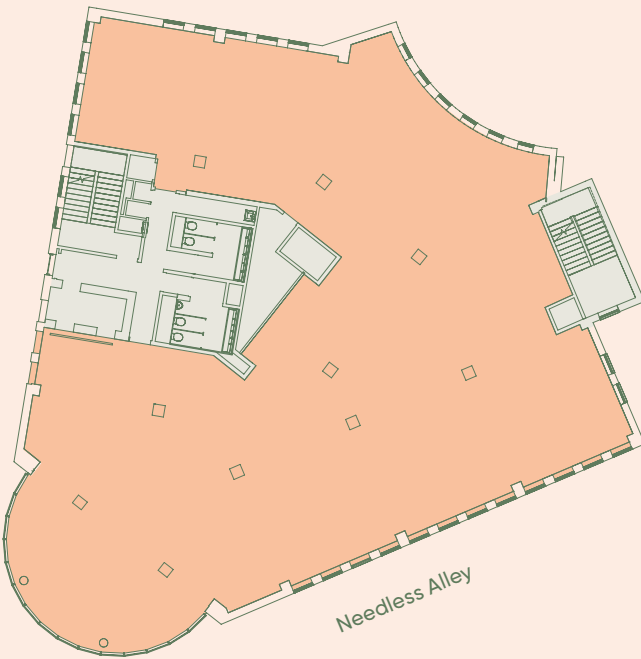
5,638 sq ft / 524 sq m

Open plan desks	72
4 person meeting room	01
6 person meeting rooms	02
Phone booths	03
Kitchen	01
Breakout areas	04
<b>Total working positions</b>	<b>72</b>



## 8th floor

5,662 sq ft / 526 sq m





A desirable location is key to attracting and retaining the best people, with enviable connections and exceptional amenities, this is an area that has it all.



movers and shakers



## Location

# A central destination

Arca is at a prime location on Temple Row, with impressive views across St. Philip's Cathedral & Square.

The building's unique location provides unparalleled access to Birmingham's city centre and retail quarter, with Birmingham's major stations and metro all within an eight minute walk.



### Images

- 1\_ St Philip's Cathedral
- 1\_ Birmingham Metro
- 3\_ Grand Central
- 4\_ Shopping at the Bullring

## Walk times to transport hubs from arca

**2**  
mins



Corporation Street  
Metro Stop

**3**  
mins



Birmingham  
New Street Station

**3**  
mins



Birmingham  
Snow Hill Station

**8**  
mins



Birmingham  
Moor Street Station

Walk times taken from Google.



## Location

# Spoilt for choice

Birmingham is known for its rich and diverse amenity mix – all within easy reach of arca.

High end retail brands and independent boutiques are abundant for those who want a spot of retail therapy, whilst the social scene features celebrated independent bars and restaurants as well as Michelin starred favourites.



## Images

- 1\_ Morridge
- 2\_ Birmingham Library
- 3\_ The Ivy Brasserie
- 4\_ Paradise
- 5\_ Great Western Arcade
- 6\_ The Alchemist



For those who fancy a spot of Culture, the City features a number of high profile galleries, theatres and public spaces including The Birmingham Library, Utilita Arena and Symphony Hall.

The Mailbox is another must-see destination, home to the BBC studios as well as a host of experiences centred around digital creativity.

# Amenities / occupiers

## Restaurants

1	Tattu
2	Isaacs
3	Gaucha
	Birmingham
4	Asha's
5	Land Restaurant
6	Sushi Passion
7	Folium
8	Opheem
9	Original
	Patty Men
10	Otto
11	Indian Brewery
12	Lasan
13	Hen & Chickens
14	Pasta Di Piazza
15	Gusto
16	Fazenda

## Retail / leisure

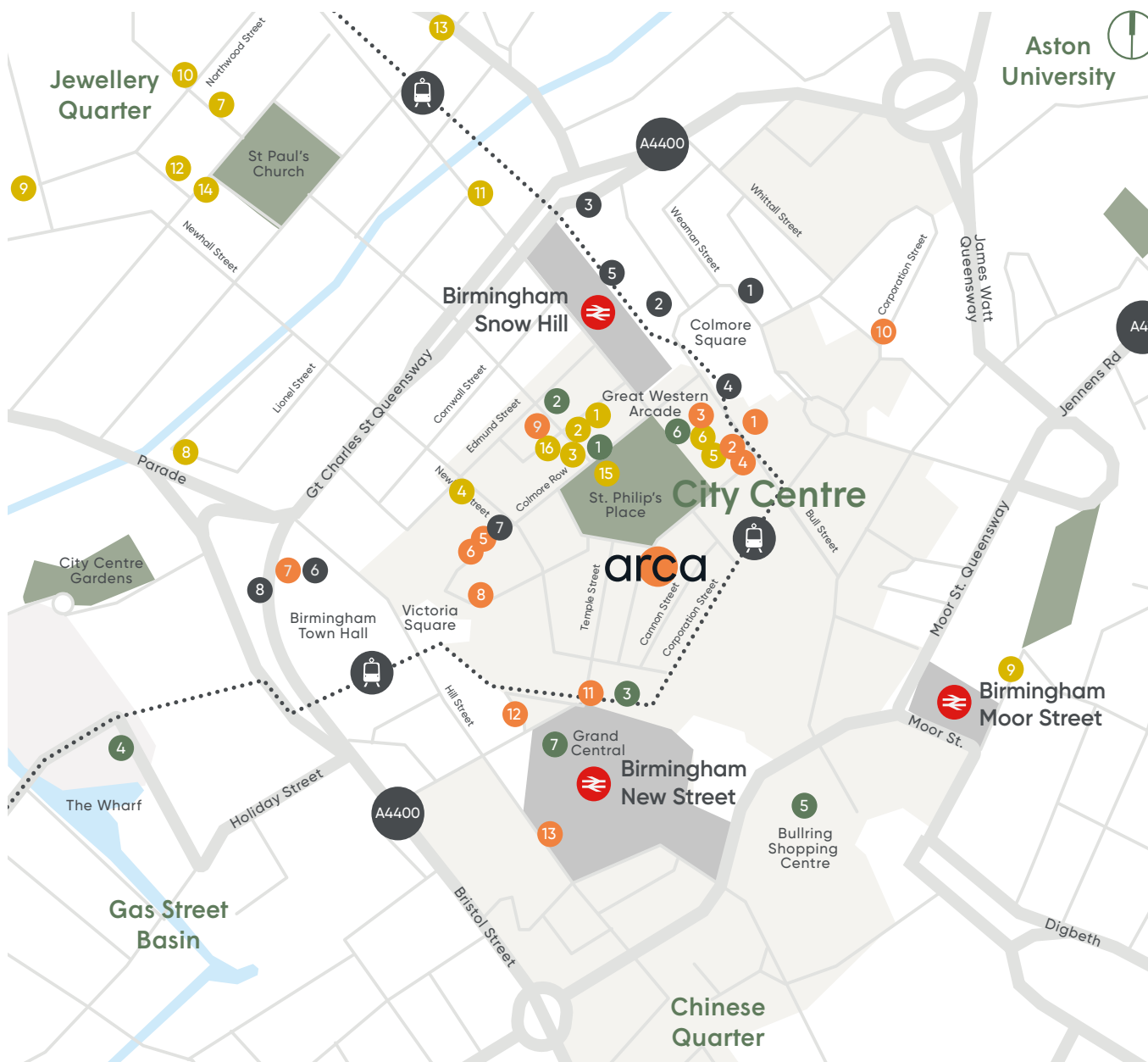
1	The Grand
2	Hotel Du Vin
3	Burlington Hotel
4	The Hyatt
5	Bullring Shopping Centre
6	Great Western Arcade
7	Grand Central

## Cafés and bars

1	Waylands Yard
2	Pineapple Club
3	Loki
4	Morridge
	Oats + Coffee
5	Henman & Cooper
6	The Colmore
7	Albert Schloss
8	Pure Bar
9	The Roebuck
10	Boston Tea Party
11	Tonight Josephine
12	Yorks Café
13	Bonehead

## Occupiers

1	Amey
	Investec
	Rathbone IM
2	Barclays, KPMG
3	BT
4	EY
	Shakespeare Martineau
5	HS2
	Gowling WLG
6	PwC
7	Grant Thornton
8	Goldman Sachs





# Further information

A refurbishment by

# Oval

## Viewings

Strictly through joint  
letting agents.

## Terms

Upon application.

# CBRE

Theo Holmes  
07967 802 656  
[theo.holmes@cbre.com](mailto:theo.holmes@cbre.com)

Luke Nowacki  
07880 164 166  
[luke.nowacki@cbre.com](mailto:luke.nowacki@cbre.com)



**CUSHMAN &  
WAKEFIELD**

Scott Rutherford  
07824 436 439  
[scott.rutherford@cushwake.com](mailto:scott.rutherford@cushwake.com)

Callum Gilbert  
07766 120 682  
[callum.gilbert@cushwake.com](mailto:callum.gilbert@cushwake.com)

# arca.work

Misrepresentations Act 1967 – Whilst all the information in this brochure is believed to be correct, neither the agent nor the client guarantee its accuracy nor is it intended to form any part of any contract. All areas quoted are approximate. All building images are computer generated. August 2024.

Designed by Cre8te - 020 3468 5760 - [cre8te.london](http://cre8te.london)